

clever



Room 5 44 Headland Park

, Plymouth, PL4 8HT

£120 Per week

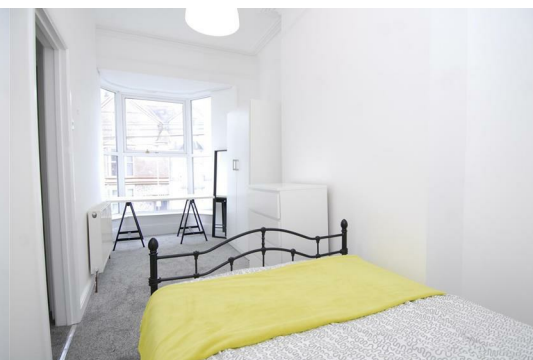


ENSUITE ROOM AVAILABLE NOW

. This property is perfect for those seeking a comfortable and convenient living arrangement in the heart of the city centre. Each bedroom is equipped with its own ensuite, providing residents with the privacy and convenience they desire.

The spacious lounge serves as a welcoming communal area, ideal for relaxation and socialising with housemates. The generous size of this room allows for various seating arrangements, making it a perfect spot for gatherings or simply unwinding after a long day.

One of the standout features of this property is that all bills are inclusive, offering peace of mind and simplifying your monthly budgeting. This makes it an attractive option for students or professionals looking for a hassle-free living experience.



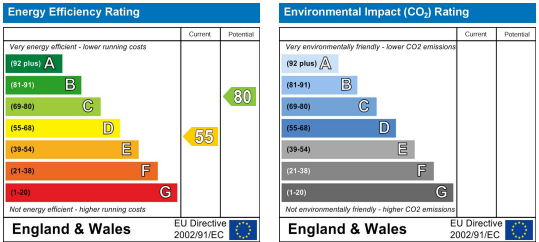
Area Map



Floor Plans



Energy Efficiency Graph



These particulars, whilst believed to be accurate are set out as a general outline only for guidance and do not constitute any part of an offer or contract. Intending purchasers should not rely on them as statements of representation of fact, but must satisfy themselves by inspection or otherwise as to their accuracy. No person in this firms employment has the authority to make or give any representation or warranty in respect of the property.